



arteco
ENGENIOUS COOLANTS

LET'S TALK COOLANTS



House Rules

Everyone is muted by default to ensure good audio quality

**

To raise questions, please write them in Q&A box

**

Please do not post anonymous questions

**

Questions will be handled after the presentation

**

The webinar will be recorded and made available afterwards

Love is a two-way street
constantly under
construction

Carroll Bryant



Launch Freecor® EV-range

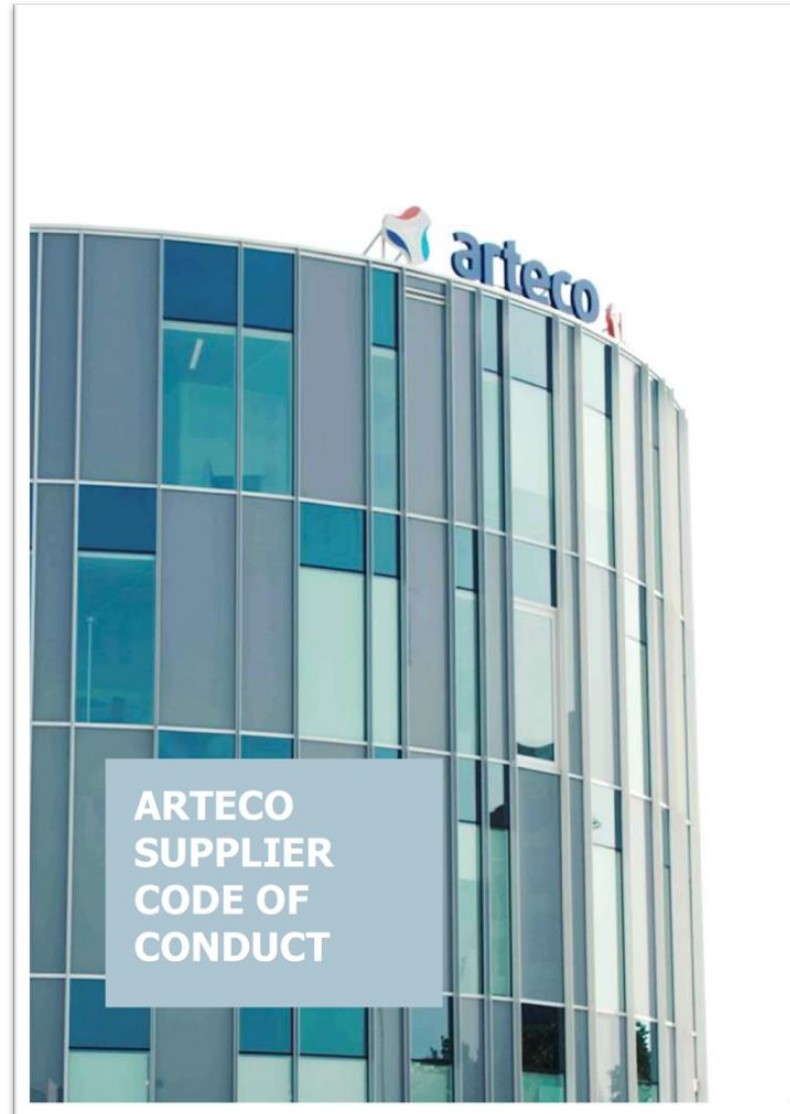


Arteco's Vision



We cool the systems of our ever warming planet
by providing **ingenious coolant technologies**
throughout **the world.**

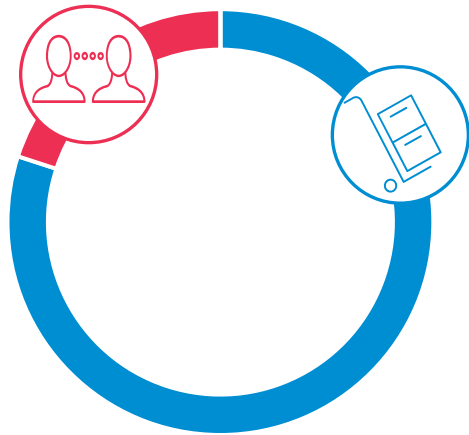
Supplier Code of conduct





Why?

Current



01

Evaluation of deliveries

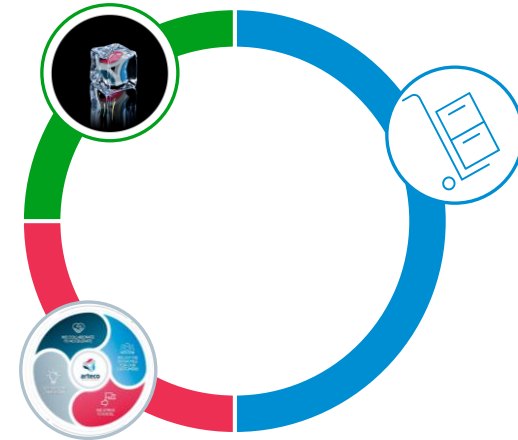
02

Arteco values
 Arteco team feedback

03

Corporate Social
 Responsibility
 Questionnaire

New



01

Evaluation of deliveries

Every Delivery = 3 points

- non-conformity: Penalty points
- Extra-ordinary performance: Positive

This part accounts for 50% of the total score

02

Arteco values

Arteco team feedback

Feedback about the 4 categories

This part accounts for 25% of the total score



Evaluation by our Sustainability team, based on a yearly questionnaire

- 1) Emission Management
- 2) Compliance & Ethics
- 3) Product Specific Information
- 4) Human Capital
- 5) Climate
- 6) Supplier Qualification

This part accounts for 25% of the total score

Cool People



Cool Resources



Cool Business



Cool Climate





03

Corporate Social Responsibility Questionnaire



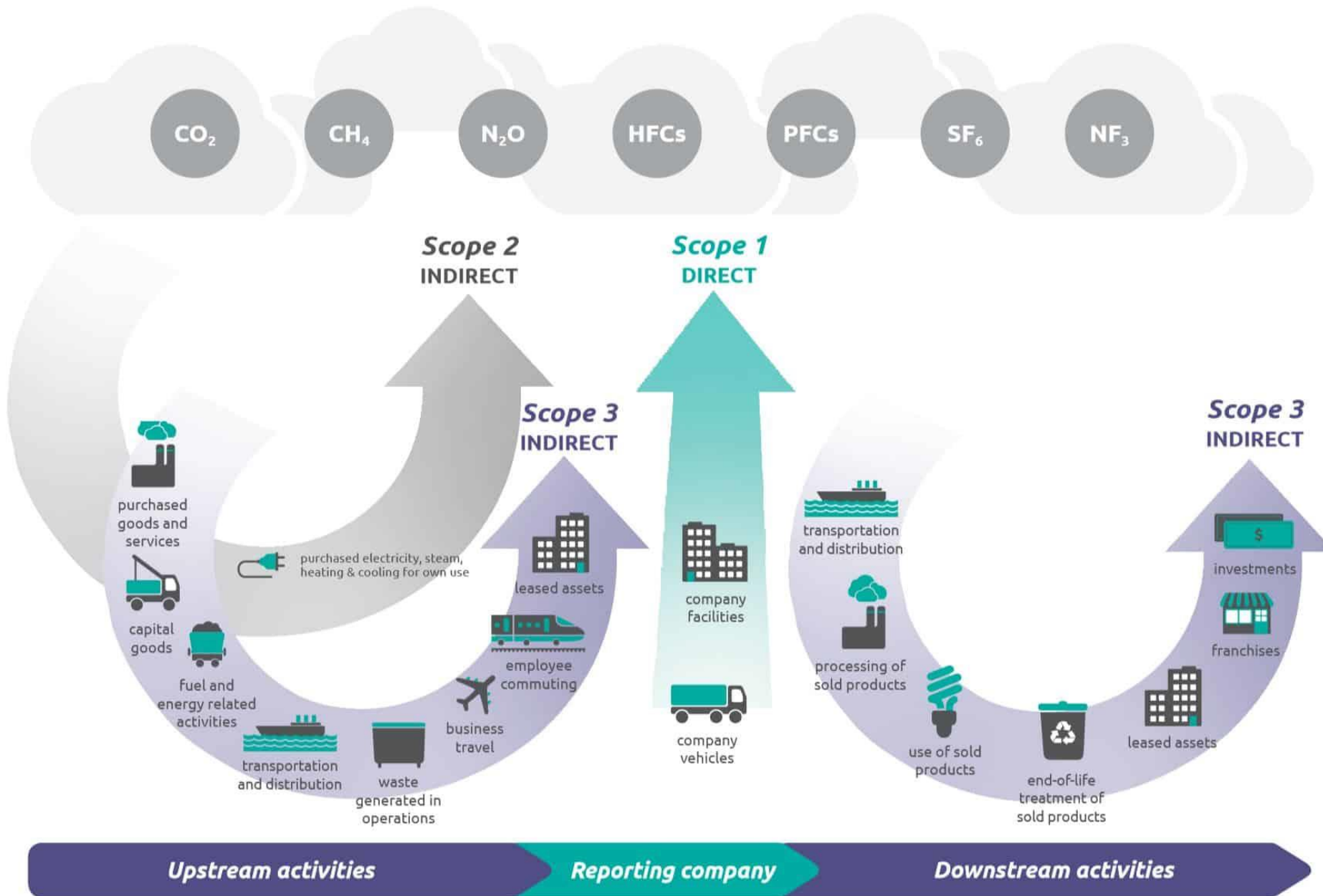
Emission management

- Ecovadis
- CDP – former Carbon Disclosure Project
- Other

Evaluation by our Sustainability team, based on a yearly questionnaire

- 1) **Emission Management**
- 2) Compliance & Ethics
- 3) Product Specific Information
- 4) Human Capital
- 5) Climate
- 6) Supplier Qualification

This part accounts for 25% of the total score





03

Corporate Social Responsibility Questionnaire

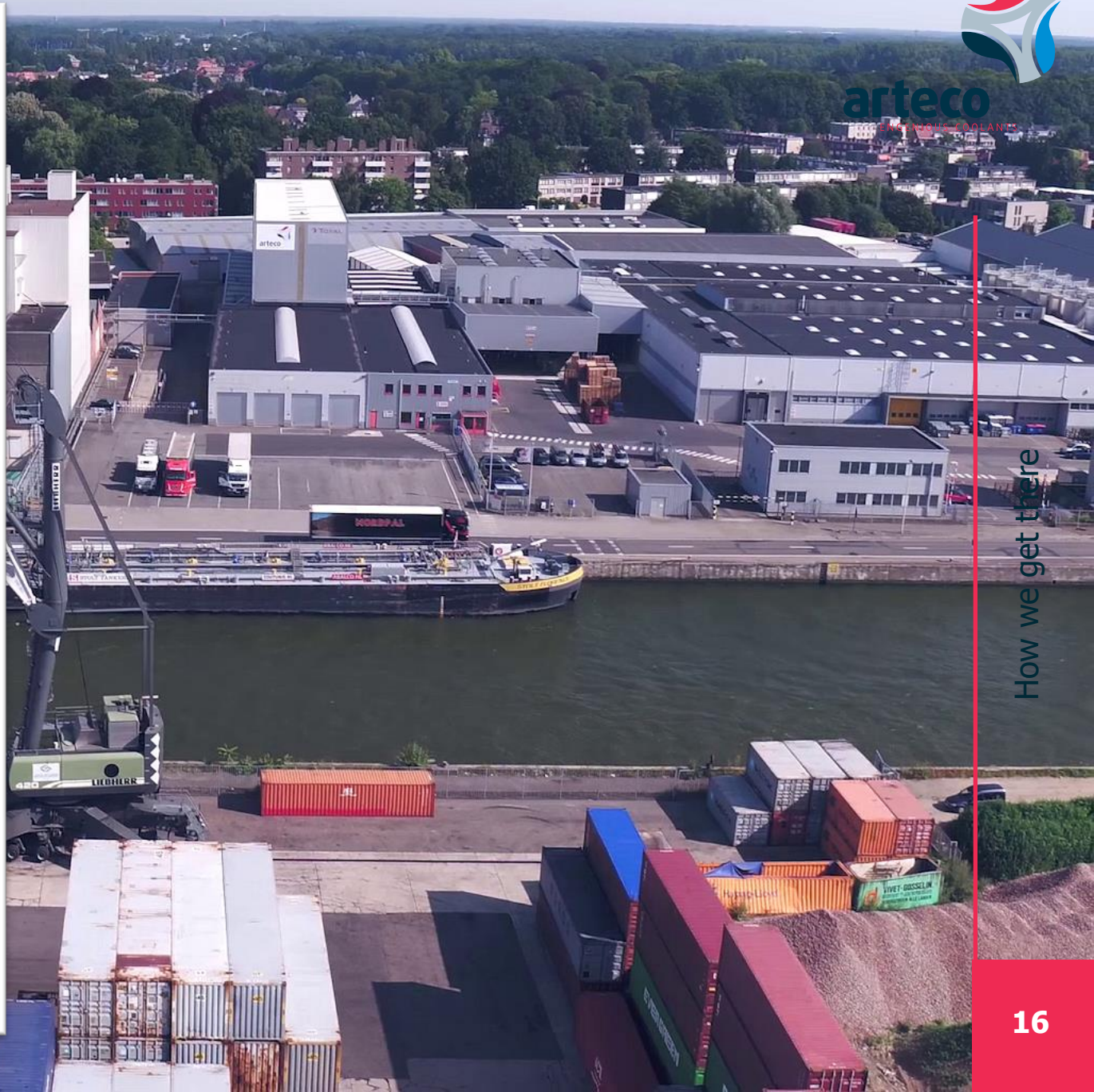
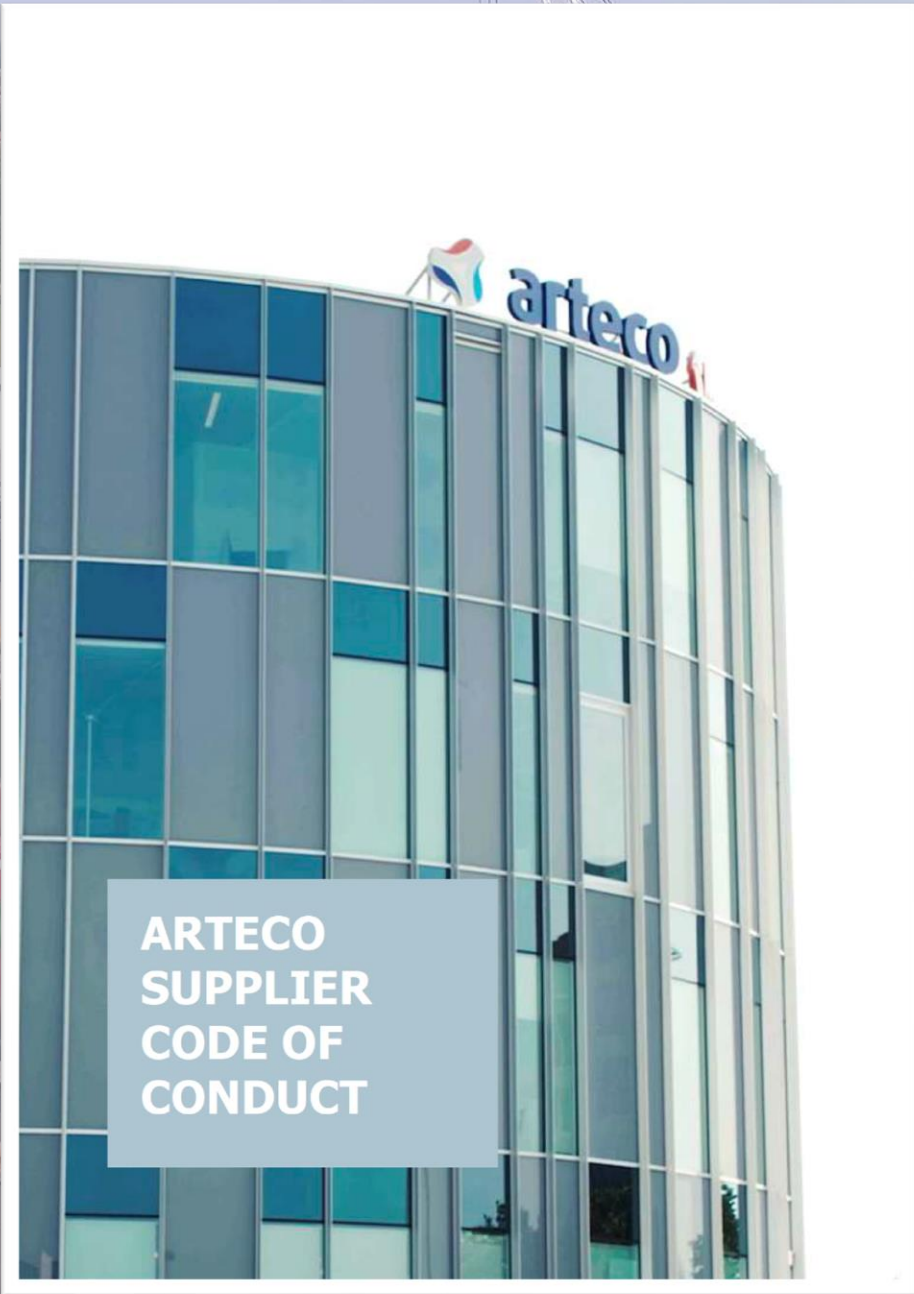
Compliance & Ethics

- Code of Conduct
- Whistleblowing policy

Evaluation by our Sustainability team, based on a yearly questionnaire

- 1) Emission Management
- 2) **Compliance & Ethics**
- 3) Product Specific Information
- 4) Human Capital
- 5) Climate
- 6) Supplier Qualification

This part accounts for 25% of the total score



arteco
ENERGIE & POLYMER

How we get there



03

Corporate Social Responsibility Questionnaire

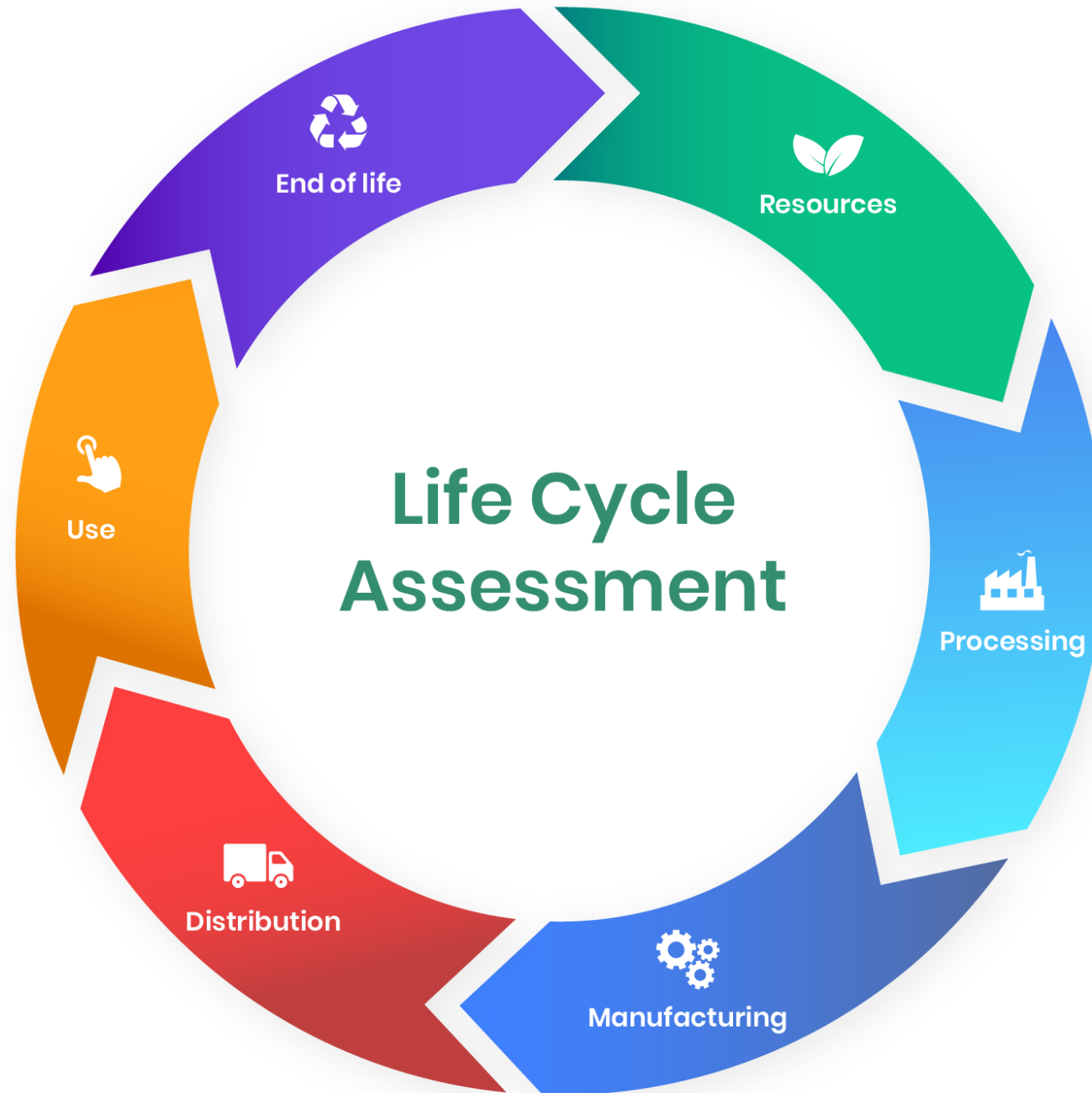
Product Specific Information

- EPD – Environmental Product Declaration
- LCA – Life Cycle Analysis
- PCF – Product Carbon Footprint

Evaluation by our Sustainability team, based on a yearly questionnaire

- 1) Emission Management
- 2) Compliance & Ethics
- 3) Product Specific Information**
- 4) Human Capital
- 5) Climate
- 6) Supplier Qualification

This part accounts for 25% of the total score





03

Corporate Social Responsibility Questionnaire

Human Capital

➤ Diversity, Equality, Inclusion

Evaluation by our Sustainability team, based on a yearly questionnaire

- 1) Emission Management
- 2) Compliance & Ethics
- 3) Product Specific Information
- 4) Human Capital**
- 5) Climate
- 6) Supplier Qualification

This part accounts for 25% of the total score





03

Corporate Social Responsibility Questionnaire



Climate

- Commitment to Paris agreement
- Net zero strategies or plans
- Waste management
- Water management

Evaluation by our Sustainability team, based on a yearly questionnaire

- 1) Emission Management
- 2) Compliance & Ethics
- 3) Product Specific Information
- 4) Human Capital
- 5) Climate**
- 6) Supplier Qualification

This part accounts for 25% of the total score



Save & increase forest area
 to capture greenhouse
 gases from the atmosphere

Hold average increase in
 global temperature to 2°C

Paris agreement goals

Make finance
 consistent and aligned
 with Agreement goals

Limit temperature
 increase to 1.5°C

Increase ability to adapt to
 climate change



www.treeaid.org



03

Corporate Social Responsibility Questionnaire



Supplier qualification

- How is your company dealing with its supply chain?

Evaluation by our Sustainability team, based on a yearly questionnaire

- 1) Emission Management
- 2) Compliance & Ethics
- 3) Product Specific Information
- 4) Human Capital
- 5) Climate
- 6) **Supplier Qualification**

This part accounts for 25% of the total score



03

Corporate Social Responsibility
Questionnaire

- 🏆 Together we can go the extra mile for sustainability
 - 🏆 Be as specific as possible
 - 🏆 Reach out to us if something isn't clear

01

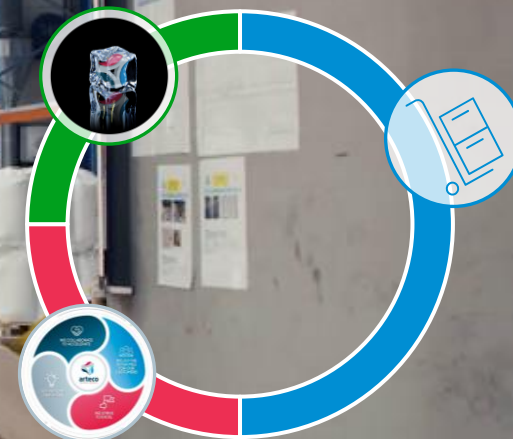
Evaluation of
deliveries
50%

02

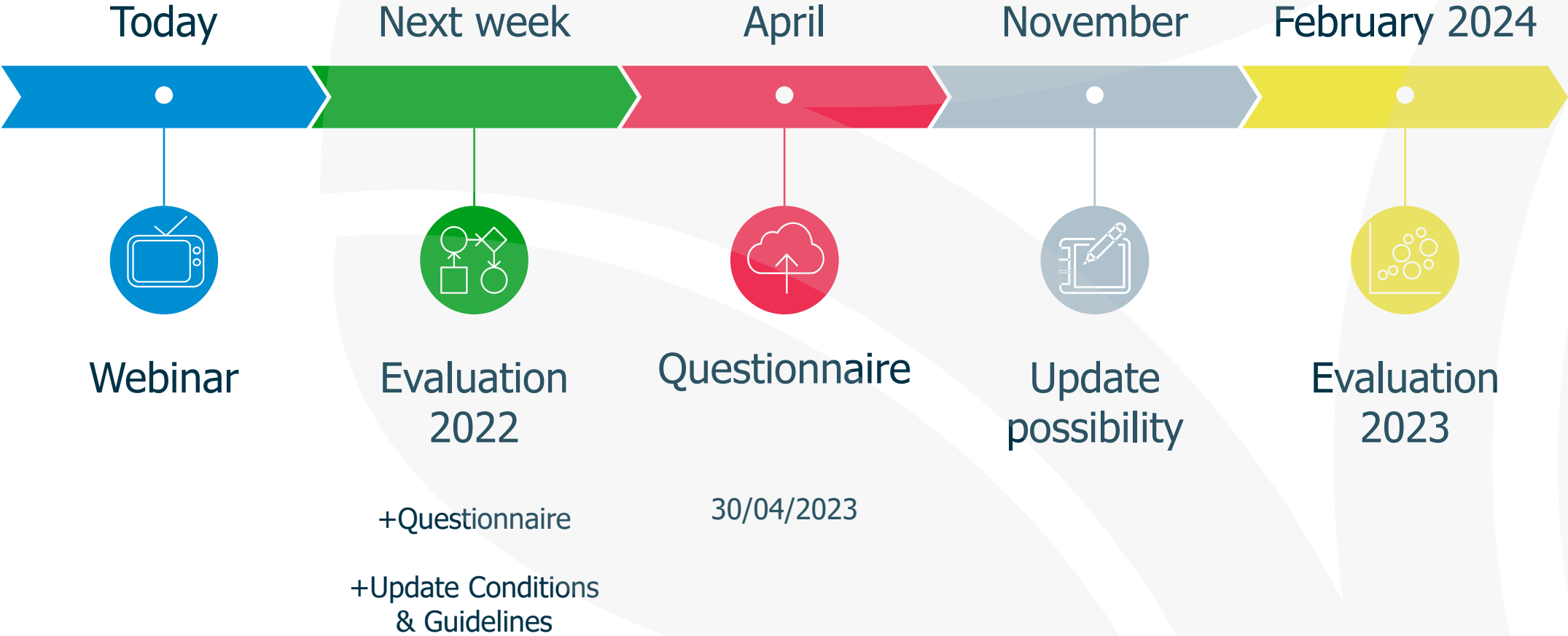
Arteco values
25%

03

Corporate Social
Responsibility
25%



Timings



Arteco Supplier Award

